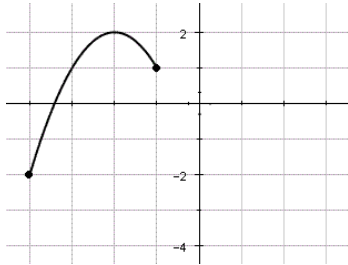


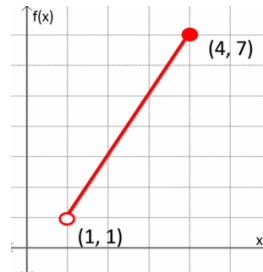
## 3.2 Domain and Range

Determine the Domain and Range of the following functions.

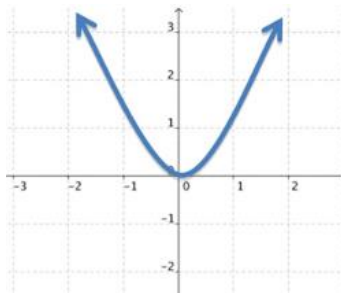
1.



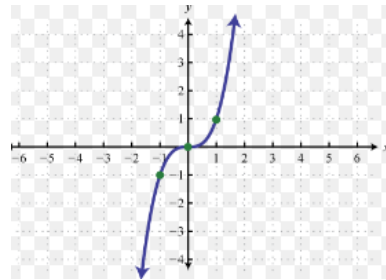
2.



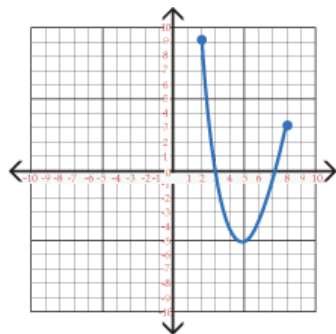
3.



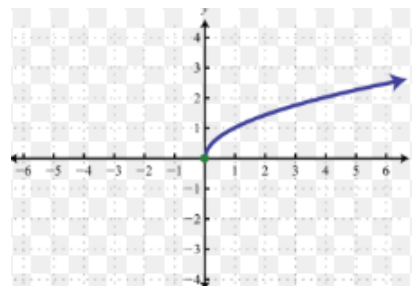
4.



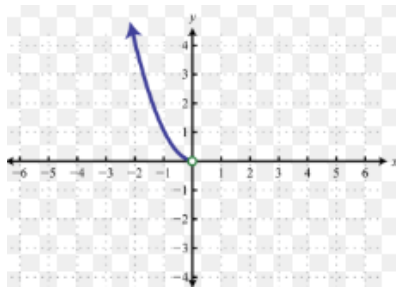
5.



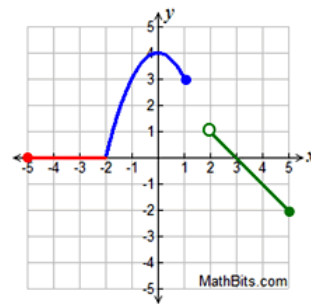
6.



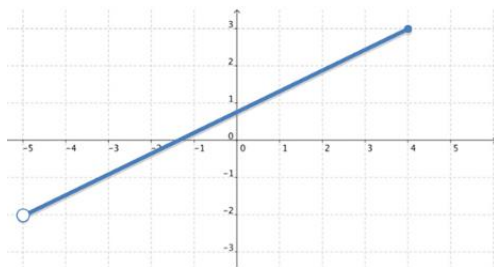
7.



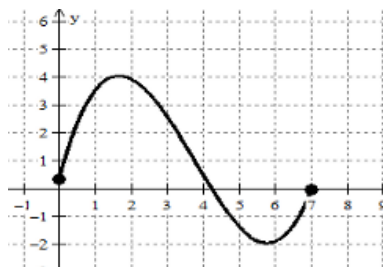
8.



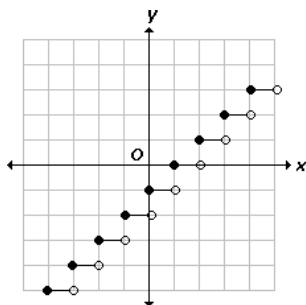
9.



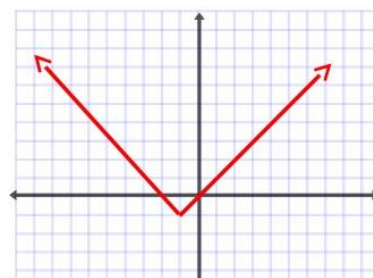
10.



11.

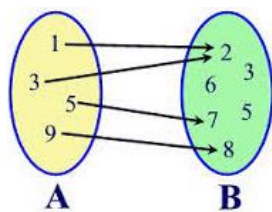


12.



State the Domain and Range of the following functions:

13.



14.

$$\{(1, 6), (2, 3), (4, 3), (5, 7)\}$$

15.

$x$	-3	-2	-1	0	1	2	3
$y$	1	-2	2	4	-3	-2	-1

16.

$$\{(-1,0) (0,-3) (2,-3) (3,0) (4,5)\}$$

17.

X	Y
1	6
2	6
3	6
7	6

18. Tara's car travels about 25 miles on one gallon of gas. She has between 10 and 12 gallons of gas in the tank. Find the reasonable domain and range values.

19. Sal and three friends plan to bowl one or two games each. Each game cost \$2.50. Find the reasonable domain and range values.